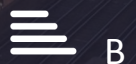




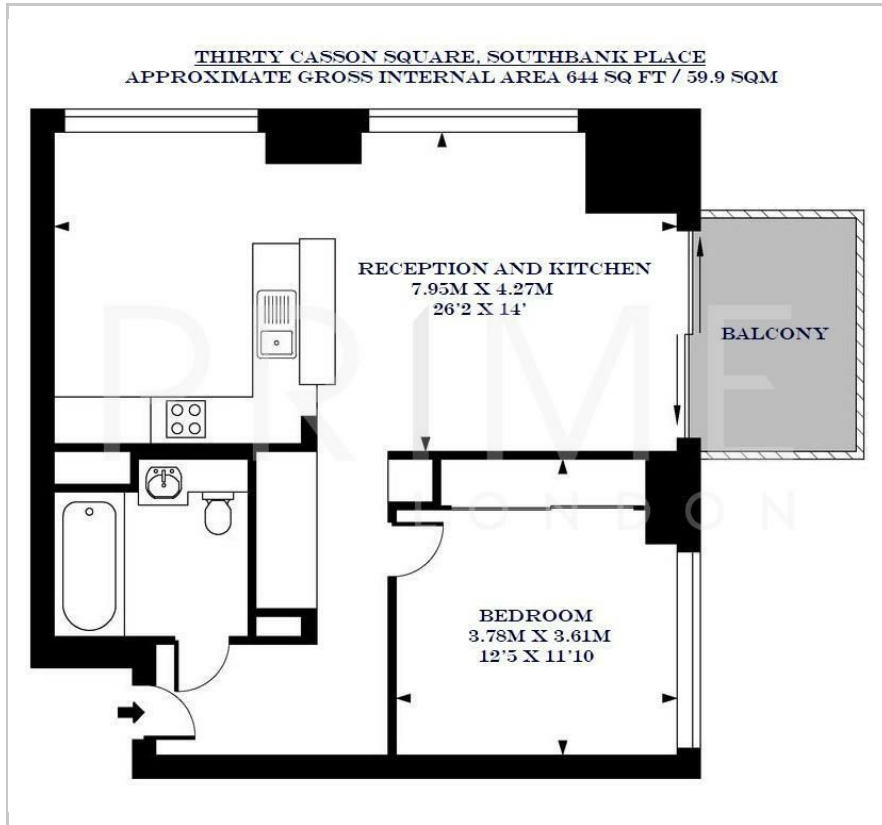
Thirty Casson Square

Southbank Place, SE1 7GY

£969 Per Week



Floor Plan



Area Map



Energy Efficiency Graph



Viewing

By appointment. Contact us on 0207 928 6663 if you wish to arrange a viewing appointment for this property, or require further information.

- Luxury one bedroom ▪ Dual aspect with private apartment
- 644 sq ft (59.9 sqm) ▪ Exclusive residents lounge and private dining area
- Residents' health club and ▪ 24 hour concierge restorative spa

An exceptional one bedroom apartment in the heart of Central London, finished to an outstanding specification, and available for lease through Prime London.

Spanning 644 sq ft (59.9 sqm) of internal living space, the apartment benefits from a private balcony and a bright dual aspect reception room, creating an abundance of natural light throughout.

The interiors seamlessly combine contemporary design with timeless elegance, featuring high quality natural materials and carefully considered finishes. The bespoke kitchen is fitted with premium integrated Miele appliances and custom cabinetry, while the luxurious bathroom is finished with polished stone surfaces and high-specification fixtures, delivering a sophisticated and refined living environment.

Residents at Southbank Place benefit from the highest quality of living, with access to the residents' only amenities floor, which includes his and hers steam and sauna rooms, a gymnasium, a 25 metre swimming pool, treatment rooms, wet room and gym classes. Residents are also able to make use of a residents' lounge, ideal for social gatherings and business meetings alike.

Additionally, the development includes 48,000 sq. ft. of shops, restaurants and bars, and a direct entrance to London Waterloo Station.



These particulars, whilst believed to be accurate are set out as a general outline only for guidance and do not constitute any part of an offer or contract. Intending purchasers should not rely on them as statements of representation of fact, but must satisfy themselves by inspection or otherwise as to their accuracy. No person in this firm's employment has the authority to make or give any representation or warranty in respect of the property.